

SM MARBLE



SANTA MARGHERITA

IMAGINATION BONDED 



TABLE OF CONTENTS

<i>Page</i>	<i>Description</i>
01	Company Profile
03	Why Santamargherita
05	About SM Marble
07	Colors
08	Finishes
11	Brecciati
15	900
16	Marghestone
19	Palazzo
20	Palladio
23	Venati
27	Standard Sizes
28	Technical Data



COMPANY PROFILE

Long term experience, constant research and innovation, with particular attention to the growth of all markets, both home and international, commercial and residential, is the hallmark of each Santamargherita product.

Santamargherita S.p.A. has operated since 1962, by the two founding families that still own it today. The HQ of Santamargherita is located in Volargne (Verona), the heart of the Italian Stone District. It includes production plants, R&D and offices.

Santamargherita is driven by a passion handed down from generation to generation and deeply rooted in the culture, tradition and skills of Valpolicella, a fascinating land stretching between Garda lake and Verona.

Though we export to over 70 countries, we still engineer, manufacture and test all our products in the same place where we started more than 60 years ago. Our dedication to sustainability and creativity has remained unchanged.

Here we welcome our customers, architects, designers, fabricators, installers and innovators to share ideas and turn them into reality. Our flexibility lets us meet new architectural trends, both in the commercial and the residential building sectors.

We can do it with our standard ranges, made from elegant and subtle hues, and with the more innovative and exclusive lines made from beautiful creative colors and exotic finishes.



SANTAMARGHERITA S.P.A. HEADQUARTERS
Volargne, Verona - Italy

WHY SANTAMARGHERITA



Design made in Italy



60+ years of experience



Direct personal assistance



Development of customized colors



Technical and installation assistance



Worldwide shipments



Long-term after sales support and service

MOSTRADOR SANTA TERESITA OLIVOS
Buenos Aires

ABOUT SM MARBLE

SM Marble is a collection of exquisite and timeless terrazzo surfaces that offer the charm, elegance and glamor of natural stone.

Coming from a tradition of quality and innovation, SM Marble is an evolution of the terrazzo surfaces that made Santamargherita world renowned. Crafted from the most precious marbles in various sizes, grains and color tones, SM Marble surfaces are skillfully bonded using polyester resin. The advantages of resin bonded surfaces are:

- Natural beauty through-body marble
- Reduced thickness for less weight and freight costs
- Enhanced strength for better performance
- Enhanced technical characteristics
- Color consistency, ideal for large commercial flooring applications
- Wide range of pattern and color options that create boundless opportunities for creative designs



COLORS

SM Marble product range consists of a wide variety of original colors and designs. Our advanced manufacturing technology allows us to mix natural raw materials with a touch of human creativity giving life to a collection that is suitable for any design application.



FINISHES

SM Marble products are available in three finishes: Polished, Honed (Mat) and Brushed.

Polished Finish

- Classic
- Bright
- Brilliant



Honed Finish

- Natural
- Harmonious
- Light



Brushed

- Textured
- Luxurious
- Vibrant





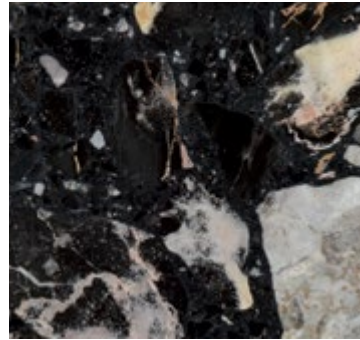
77 COLEMAN
London



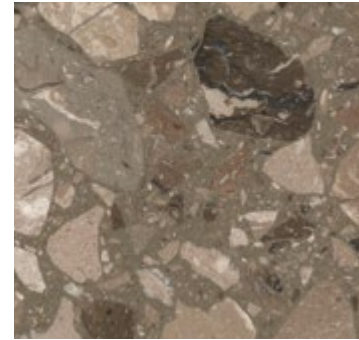
HOTEL LE BALLU
Paris



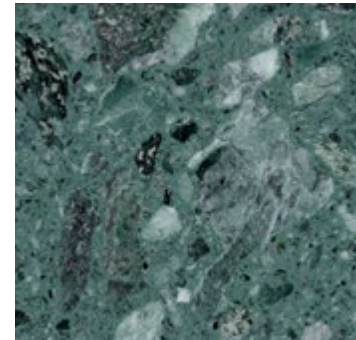
BRECCIATI



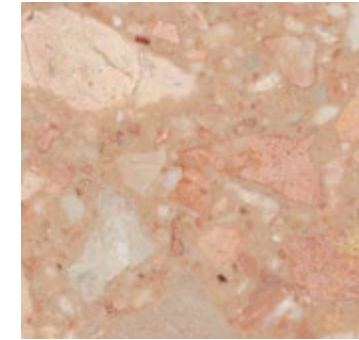
D 110
NERO
PORTORO



D 150
BLACK
ROYAL



C 113
VERDE
ALPI



A 127
ROSA DEL
GARDA



C 107
GRIGIO
CARNICO



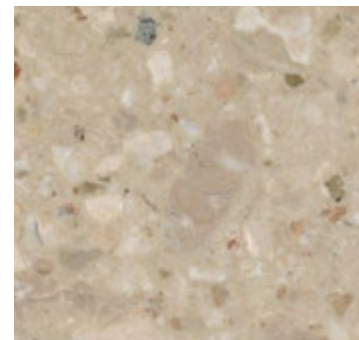
D 123
RASOTICA
While supplies last



C 128
ROSSO
VERONA



D 125
FIOR
DI PESCO



A 101
BRECCIA
AURORA



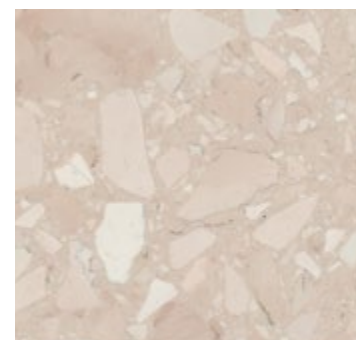
B 108
PERLATO
ROYAL



B 106
ARABESCATO
BIANCO



A 103
BOTTICINO



C 126
ROSA
PERLINO

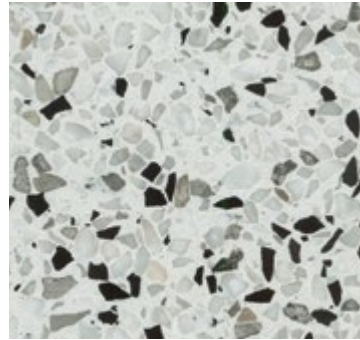


CHE FICO!
Menlo Park, CA

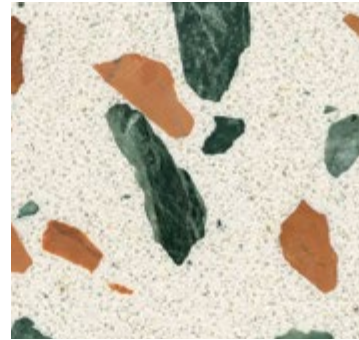


SM MARBLE

900



G 10
NEW YORK



MD 2H5
VENDOME



MB 2H6
CAMDEN

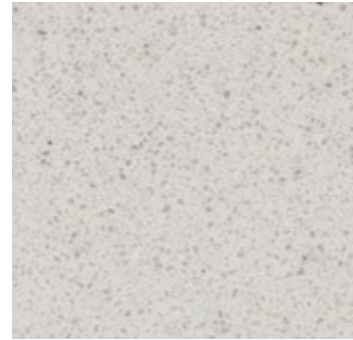


G 18
MILANO



G 14
BERLIN

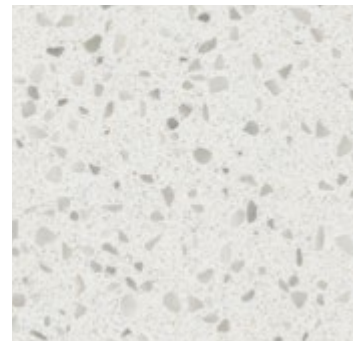
MARGHESTONE



MA 260
BIANCO
GHIACCIO



MB 244
MAREMMA
While supplies last



MA 267
BIANCO
AVORIO



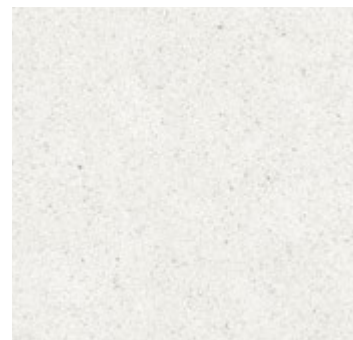
MA 2B9
NINFEA



MC 256
BIANCO
NEVE



MA 2H1
DALMATA
BEIGE



MD 2F8
ALTHEA
While supplies last

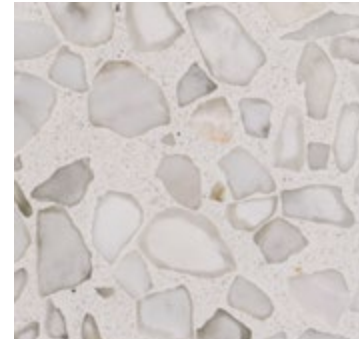


OTTOLENGHI CHELSEA
London

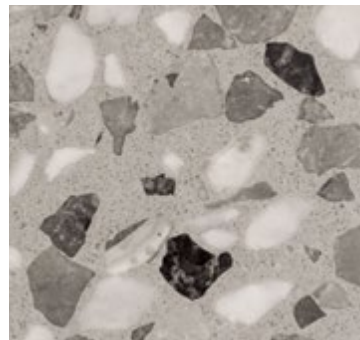
PALAZZO



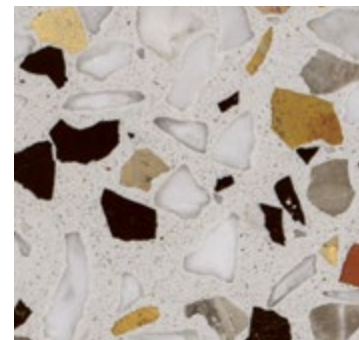
G 32
PALAZZO
MAFFEI



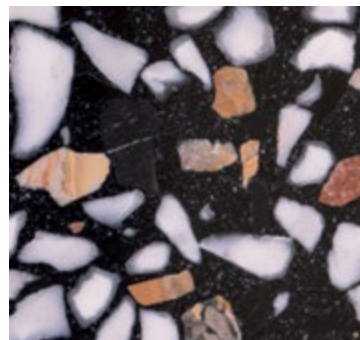
G 28
PALAZZO
REALE



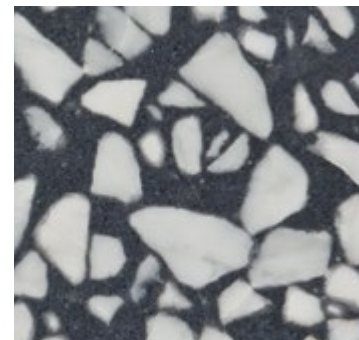
G 31
PALAZZO
FARNESE



G 27
PALAZZO
DUCALE



G 26
PALAZZO
PISANI



G 33
PALAZZO
DIAMANTI
While supplies last

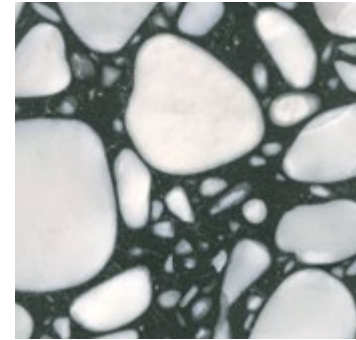


G 30
PALAZZO
FOSCARI

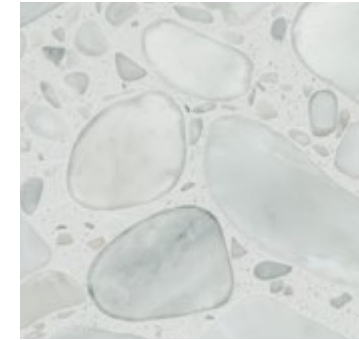


G 29
PALAZZO
MAZZANTI

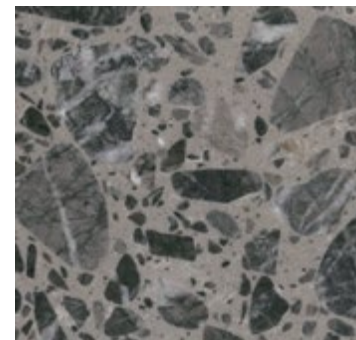
PALLADIO



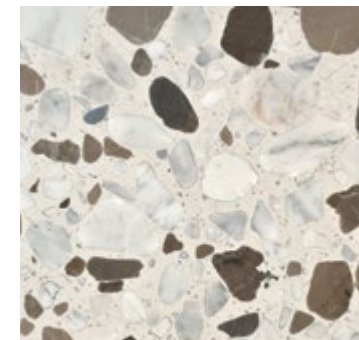
D 151
PALLADIO
MORO



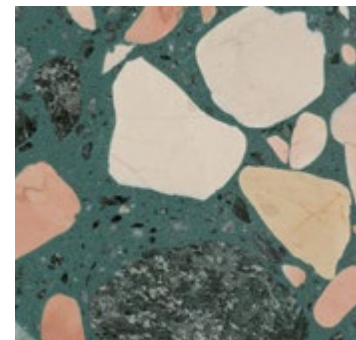
D 153
PALLADIO
DOGE



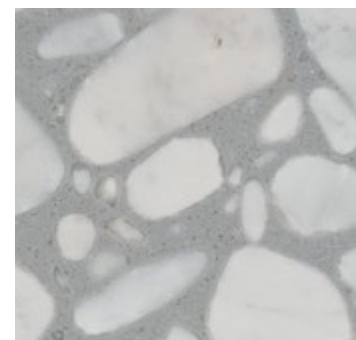
D 154
PALLADIO
LAGUNA
While supplies last



D 156
PALLADIO
RIALTO



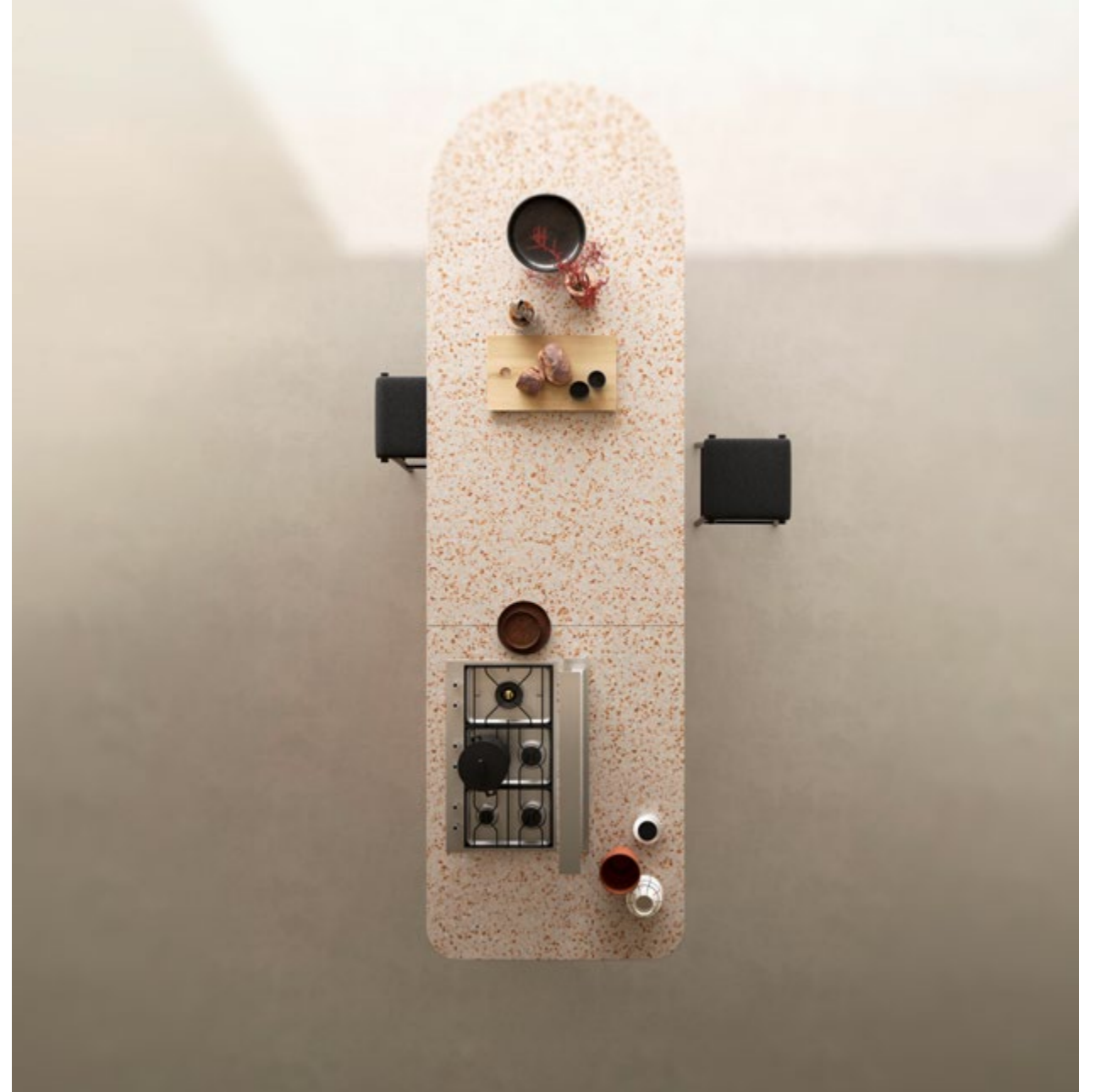
D 155
PALLADIO
FENICE



D 152
PALLADIO
GRISO



LA RINASCENTE
Rome



VENATI



MC 2D9
MIMOSA



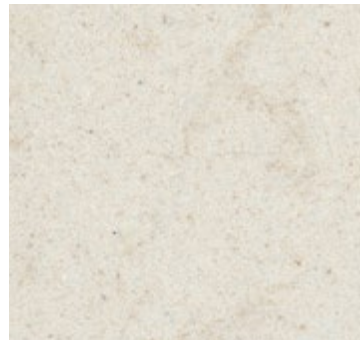
MC 2D3
PEONIA



MC 2D4
DHALIA
While supplies last



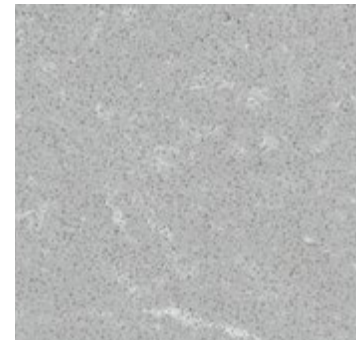
MC 2H4
GRIGIO
PERLA



MB 2G3
COTONE



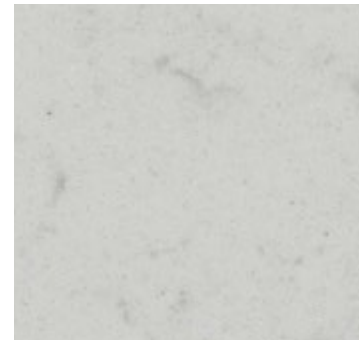
MA 2G9
TIBET



MB 2G4
LINO



MC 2E0
MAGNOLIA



MA 2G7
LOTUS



MC 2H2
LAPIS



STANDARD SIZES

The materials are manufactured in blocks, which are then cut into slabs. Standard and custom sizes based on slab's dimension are available.



GREENGUARD Certified



Member of Green Building Council Italia

cm 305



cm 124

Slabs

120" x 48" x 1/2" nominal
305 x 124 x 1.2cm

120" x 48" x 3/4" nominal
305 x 124 x 2.0cm

120" x 48" x 1-1/8" nominal
305 x 124 x 3.0cm

Tiles

12" x 12" x 1/2" nominal
30 x 30 x 1.2cm

16" x 16" x 1/2" nominal
40 x 40 x 1.2cm

24" x 24" x 1/2" nominal
60 x 60 x 1.2cm

Skirting Tiles

19 3/4" x 2 3/4" x 3/8" nominal
50 x 7 x 0.9cm

Scan the QR code to access updated installation and care & maintenance literature



TECHNICAL DATA

CHARACTERISTICS	STANDARD	VALUE	NOTES
Length and width	EN 14617-16	± 0,5 mm	Refers to tiles
Thickness	EN 14617-16	± 0,7 mm	Refers to tiles
Straightness of sides	EN 14617-16	± 0,3 mm	Refers to tiles
Rectangularity	EN 14617-16	± 0,9 mm	Refers to tiles
Center curvature	EN 14617-16	± 0,2% refers to length	Refers to tiles
Edge curvature	EN 14617-16	± 0,2% refers to length	Refers to tiles
Warping	EN 14617-16	± 0,2% refers to length	Refers to tiles
Apparent density	EN 14617-1	2450 - 2650 Kg/m ³	---
Water absorption	EN 14617-1	≤ 1,00%	---
Flexural strength	EN 14617-2	10 - 35 MPa	---
Abrasion resistance	EN 14617-4	33 - 44 mm	---
Frost resistance	EN 14617-5	KM _{f25} 0,4 - 1,2	---
Thermal shock resistance	EN 14617-6	Δm% ≤ 0,15 %	Test temperature: 70°C
		ΔR% ≤ 60 %	
Impact resistance	EN 14617-9	1,0 - 2,0 J	For thickness 12 mm
		1,5 - 3,5 J	For thickness 20 mm
Chemical resistance	EN 14617-1	C1	
Linear thermal expansion coefficient	EN 14617-11	12 - 26 x 10 ⁻⁶ ° C ⁻¹	
Dimensional stability	EN 14617-12	Class A (<0,3 mm)	Class B (0,3 - 0.6 mm) for Verde Liguria and Rosso Levanto
Electrical resistivity	EN 14617-13	R _s ≥ 10 10 Ω	Refers to surface
		R _v ≥ 10 8 Ω m	Refers to volume
Compression resistance	EN 14617-15	90 - 150 MPa	
Mohs hardness	EN 101	up to 3 Mohs	
Thermal conductivity	EN 12524	1,3 W/(m K)	From tabulated values
Reaction to fire	EN 13501-1	A2 fl -s1	
Slip resistance	EN 14231	≥ 35 (Dry)	For honed H9
		≥ 3 (Wet)	
Slip resistance	DIN 51130	R9	

SM MARBLE



SANTA MARGHERITA

IMAGINATION BONDED 

SANTAMARGHERITA S.p.A.
Via del Marmo, 1098 - 37020 Volargne (VR) - Italy
Tel. +39 045 6835888 - Fax +39 045 6835800
info@santamargherita.net

SANTAMARGHERITA USA
usa@santamargherita.net

SANTAMARGHERITA HONG KONG
phone: +852 2804 1280
hk@santamargherita.net

www.santamargherita.net

Distributed by

Cover photo credit: David Franck